

## Han 6HsB-F-S

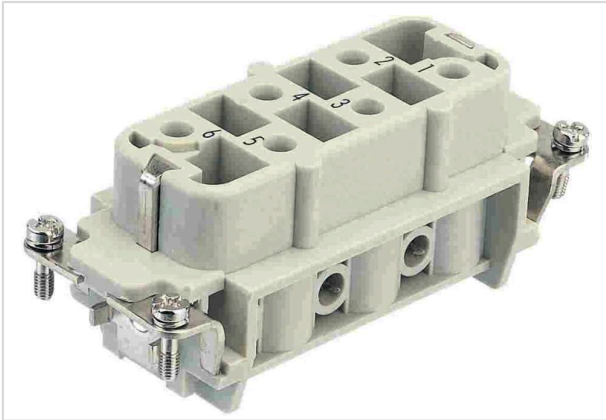


Image is for illustration purposes only. Please refer to product description.

Part number	09 31 006 2701
Specification	Han 6HsB-F-S
HARTING eCatalogue	<a href="https://b2b.harting.com/09310062701">https://b2b.harting.com/09310062701</a>

### Identification

Category	Inserts
Series	Han <sup>®</sup> HsB

### Version

Termination method	Screw termination
Gender	Female
Size	16 B
With wire protection	Yes
Number of contacts	6
PE contact	Yes

### Technical characteristics

Conductor cross-section	1.5 ... 6 mm <sup>2</sup>
Rated current	35 A
Rated voltage conductor-earth	400 V
Rated voltage conductor-conductor	690 V
Rated impulse voltage	6 kV
Pollution degree	3
Rated voltage acc. to UL	600 V
Rated voltage acc. to CSA	600 V
Insulation resistance	>10 <sup>10</sup> Ω
Contact resistance	≤1 mΩ
Stripping length	11.5 mm



Pushing Performance  
Since 1945

## Technical characteristics

Tightening torque	0.5 Nm Fixing screws M3
	1.2 Nm Contact screw M4
	2 Nm PE screw M5
Limiting temperature	-40 ... +125 °C
Mating cycles	≥500

## Material properties

Material (insert)	Polycarbonate (PC)
Colour (insert)	RAL 7032 (pebble grey)
Material (contacts)	Copper alloy
Surface (contacts)	Silver plated
Material flammability class acc. to UL 94	V-0
RoHS	compliant with exemption
RoHS exemptions	6(c): Copper alloy containing up to 4 % lead by weight
ELV status	compliant with exemption
China RoHS	50
REACH Annex XVII substances	Not contained
REACH ANNEX XIV substances	Not contained
REACH SVHC substances	Yes
REACH SVHC substances	Lead
ECHA SCIP number	5dbb3851-b94e-4e88-97a1-571845975242
California Proposition 65 substances	Yes
California Proposition 65 substances	Lead Nickel
Fire protection on railway vehicles	EN 45545-2 (2020-08)
Requirement set with Hazard Levels	R22 (HL 1-3) R23 (HL 1-3)

## Specifications and approvals

Specifications	IEC 60664-1 IEC 61984
	UL 1977 ECBT2.E235076 CSA-C22.2 No. 182.3 ECBT8.E235076 UL 2237 PVVA2.E318390 CSA-C22.2 No. 182.3 PVVA8.E318390
UL / CSA	



**Pushing Performance**  
Since 1945

## Commercial data

Packaging size	1
Net weight	80 g
Country of origin	Romania
European customs tariff number	85366990
GTIN	5713140048911
eCl@ss	27440205 Contact insert for industrial connectors